

# PROMIX® V METER PACKAGES

Plural Component Mixing Versatility for Liquid Finishing



Gain the technology, data, and ease of use to assure quality results now with the versatility to adapt to the future.

## 5<sup>th</sup> GENERATION FUNCTIONALITY WITH INNOVATIVE SCALABILITY

Plural component proportioners assure up to  $\pm 1$  % accuracy for top quality industrial liquid finishing results – with the ability to add more capabilities after installation.

### METER PACKAGE

Uses G3000 gear flow meters to precisely produce a mix ratio range of up to 50:1

### FLUID PATH

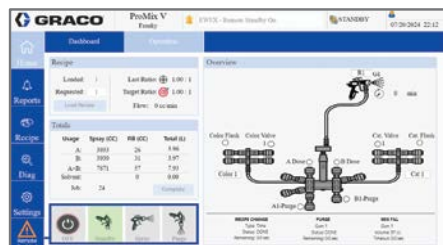
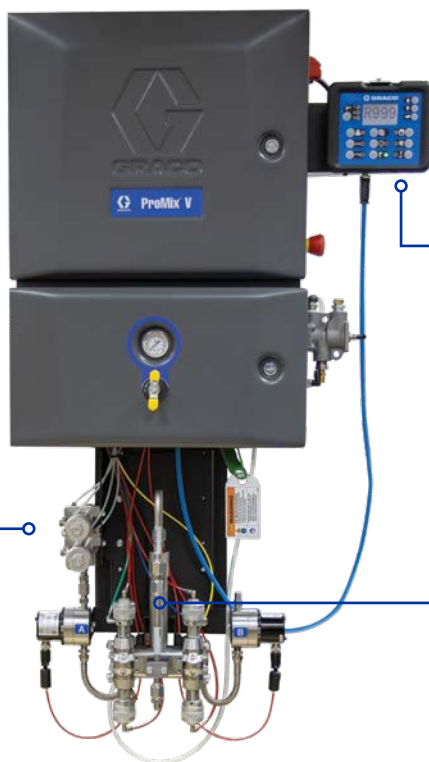
- All stainless steel (SST)
- Acid catalyst options
- 4,000 psi maximum fluid pressure

### BOOTH CONTROL

- Standard on all **ProMix V** systems
- Pot life, flow rate and ratio set point data

### FLUID MIX MANIFOLD

- Industry-leading sequential dosing
- Air/solvent chop standard that minimizes solvent use



### INTUITIVE USER INTERFACE

- Access material usage information, troubleshooting diagnostics and data reporting.
- Connect locally or remotely from tablet, laptop or desktop computer.



# PROMIX® V METER PACKAGES

## Technical Specifications



### TECHNICAL SPECIFICATIONS

### METER PACKAGE

Mix Ratio Range for Sequential Dosing	0.1:1 to 50:1
Ratio Accuracy	Up to +/-1%
Maximum Resin Colors	7
Maximum Catalysts	2
Maximum Fluid Pressure	4,000 psi
Maximum Number of Guns/Fluid Panel	2
Air/Solvent Chop	Standard



### STANDARD MIX MANIFOLD

- Easy access for quick service
- Fewer parts than legacy mix manifold
- Optional dump valves and calibration kits



For product information or to request a demonstration,  
visit [www.graco.com/ProMixV](http://www.graco.com/ProMixV)

